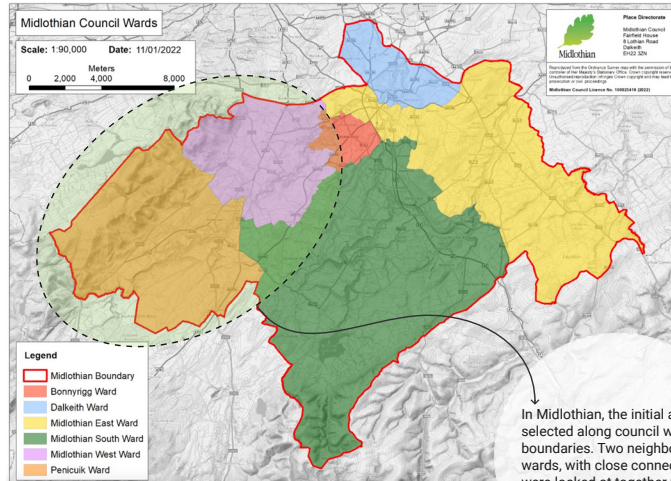


# Selecting local areas - examples

Selected areas can be based on established boundaries such as:

- political wards
- community planning areas
- key neighbourhoods undergoing significant investment or changes
- Local Partnership boundaries
- a combination of the above.

When deciding area selection, consider the practicalities of replicating the approach across the whole local authority. Successful selection will enable evidence and data capture at a meaningful scale balanced against the time and resources to replicate the process across all areas.



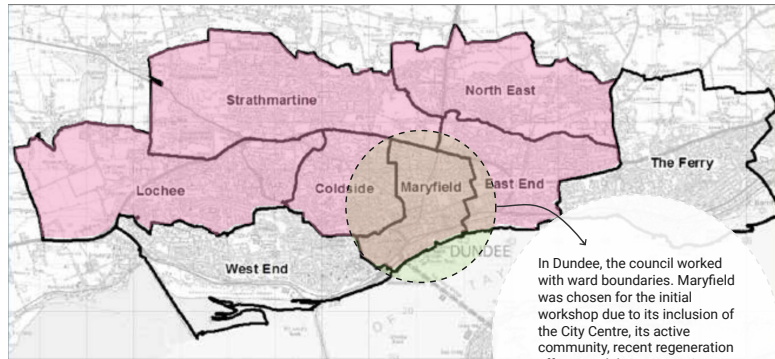
© Crown copyright and database rights 2022 OS 100023416

In Midlothian, the initial area was selected along council ward boundaries. Two neighbouring wards, with close connections were looked at together for the first area mapping workshop.



© Crown copyright and database rights 2024 OS 100029965

In the Outer Hebrides, neighbouring council wards were chosen. South Uist was looked at alongside Barra and Vatersay for the council's first area mapping workshop. While the areas were very distinct, many shared challenges and opportunities were faced by both.



© Crown copyright and database rights 2017 OS 100023371

In Dundee, the council worked with ward boundaries. Maryfield was chosen for the initial workshop due to its inclusion of the City Centre, its active community, recent regeneration efforts, and the opportunity to build on City Centre Strategic Investment Plan engagement and pandemic recovery.

Fife Council worked with its Community Planning Localities. The Levenmouth area was chosen for the first mapping workshop, where a lot of planned activities and investments offered opportunities for aligned working. The planning team replicated the approach across Fife's other six community planning areas.

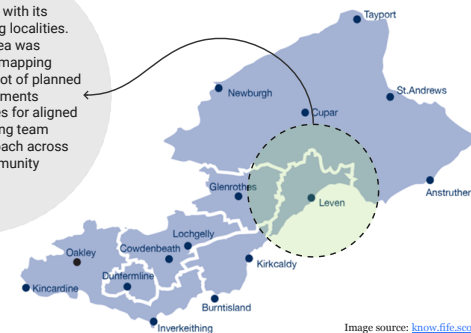


Image source: [know.fife.scot/](http://know.fife.scot/)